



Affordable Cleaning You Can Rely On

Phone: 262-833-4040 Toll Free: 877-401-0730 www.timberlineclean.com



Timberline Floor Scrubbers

Rider-S | Rider-M v2

Handmade In & Imported From Wisconsin, USA



SPECS



- Up to 176,000 sqft Per Charge
- 45 / 46 Gallons
- 26 - 32 inch decks

Applications

- Healthcare
- Grocery
- Airports

Rider-M v2

Disk Scrub Path:	28" & 32" 71 & 81 cm
Cylindrical:	26" & 30" 66 & 76 cm
Dimensions (L×W×H):	62" x 36" x 52" 158 x 92 x 133 cm
Step Up Height:	17" 43 cm
Solution Tank:	45 Gal 170 L
Recovery Tank:	46 Gal 174 L
Demisting Chamber:	1.25 Gal 4 L
Run Time:	Up to 4 Hours*
<small>*Based on continuous scrubbing run times, standard batteries, low down pressure and all options off.</small>	
Theoretical Coverage:	44,000 sqft/hr* 4,087 sqm/hr*
<small>*Coverage is based off of ISSA 2010 Cleaning Times</small>	
Practical Coverage:	20,500 sqft/hr* 1,904 sqm/hr*
<small>*Coverage is based off of ISSA 2010 Cleaning Times</small>	



Fits through 31" Entryways

- Up to 154,000 sqft Per Charge
- 22 / 23 Gallons
- 20 - 28 inch decks

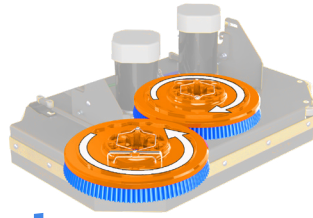
Applications

- Hotels
- Retail
- Education

Rider-S

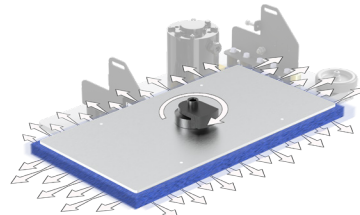
Disk Scrub Path:	20" & 26" 51 & 66 cm
Orbital:	24" & 28" 61 & 71 cm
Dimensions (L×W×H):	54" x 27" x 40" 138 x 69 x 102 cm
Step Up Height:	11" 28 cm*
Solution Tank:	22 Gal 83 L
Recovery Tank:	23 Gal 87 L
Demisting Chamber:	0.75 Gal 3 L
Run Time:	Up to 4 Hours*
<small>*Based on continuous scrubbing run times, standard batteries, low down pressure and all options off.</small>	
Theoretical Coverage:	38,500 sqft/hr* 3,576 sqm/hr*
<small>*Coverage is based off of ISSA 2010 Cleaning Times</small>	
Practical Coverage:	18,000 sqft/hr* 1,672 sqm/hr*
<small>*Coverage is based off of ISSA 2010 Cleaning Times</small>	

SCRUB DECKS



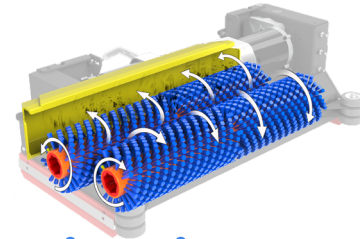
Disk

- Brush / Pad Selection
- Lowest Maintenance Cost
- Improved Cleaning on Irregular Floors
- Brushes Individually Driven for Unmatched Performance



Orbital *Rider-S Only

- Chemical Free Stripping
- Reduce Slip & Fall Potential
- 70% Reduction in Water Usage
- Consistent Results - No Swirl Marks
- VCT Prep & Recoat



Cylindrical *Rider-M v2 Only

- Eliminates Dust Mopping
- Scrub & Sweep Simultaneously
- Superior Tile & Grout Cleaning
- Excellent on Rubber Surfaces
- Great for Warehouse Debris

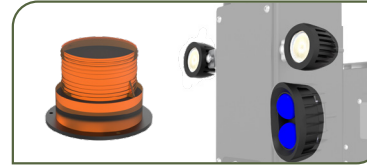
OPTIONS



Auxiliary Tank + 100 psi Spray Gun

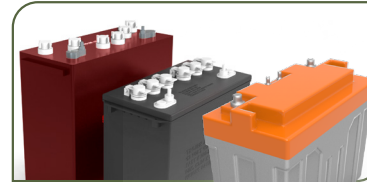
Use your preferred disinfectant or degreaser to clean a wide range of surfaces. Desks, counter tops, chairs ect.

***Auxiliary tank Rider-S Only**



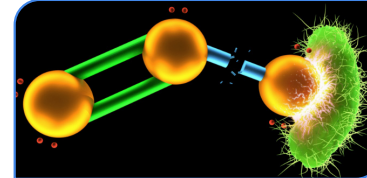
Lights

Designed to increase visibility during operation in low-light conditions. Strobe, Blue light, and dual LED headlights.



WET / AGM / Lithium Battery Options

Choose between a variety of battery options for optimal run and charge times based on the application and needs.



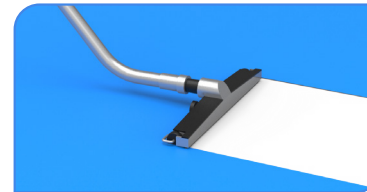
ZERO3 Chemical Free Cleaning

Replace all-purpose floor cleaner with one of Earth's most powerful oxidizers

- On Demand Aqueous Ozone.

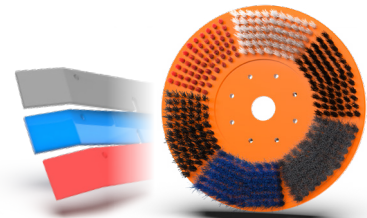
- Clean with water & Ozone alone
- Safe, affective and sustainable

***Rider-S Only**



Vac Wand

ideal for water pick up in restrooms and reaching under tables.



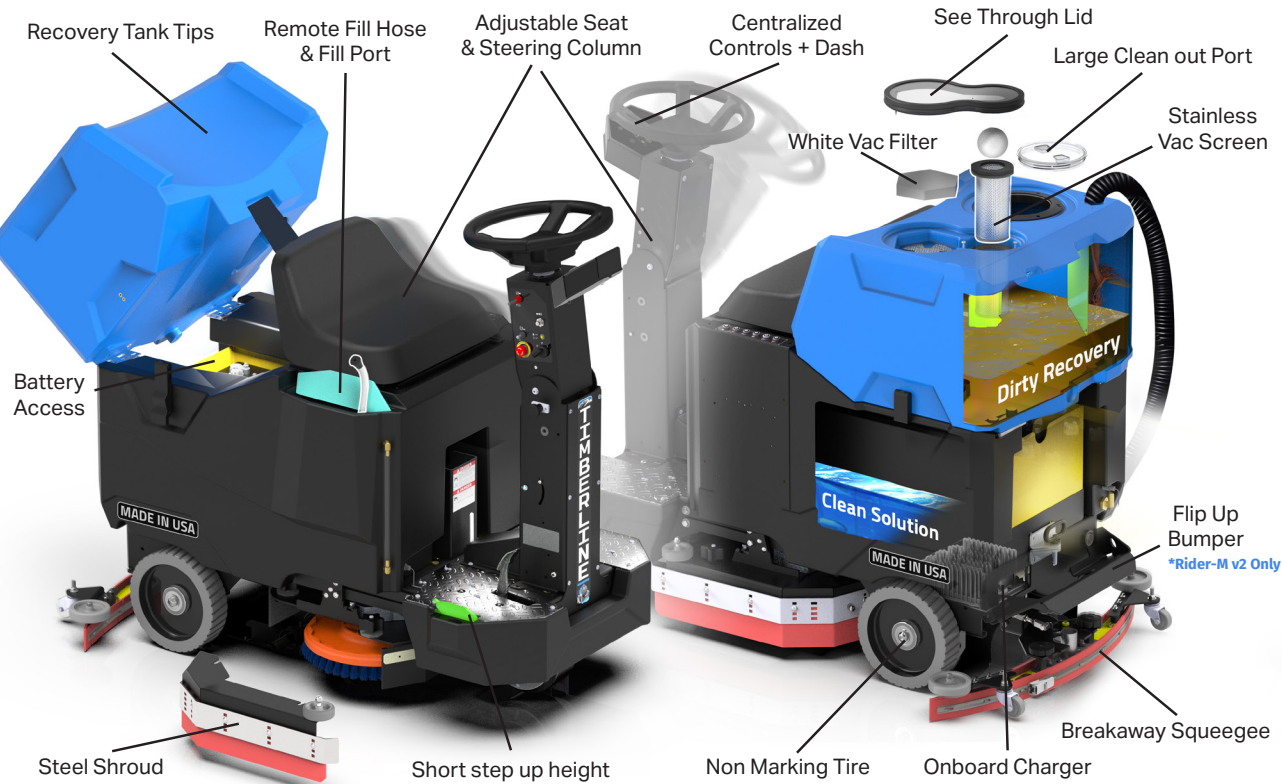
Squeegee Blade / Brush Choice

Different Materials to fit the job

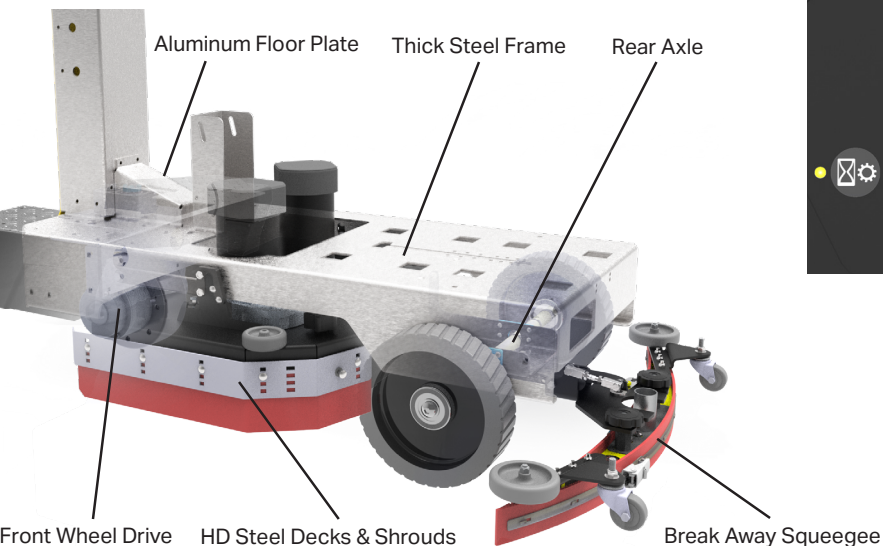
- NanoRade®
- Urethane
- Linatex®
- 5 Brush Fibers + Pad Driver

Images may include options that are not included standard

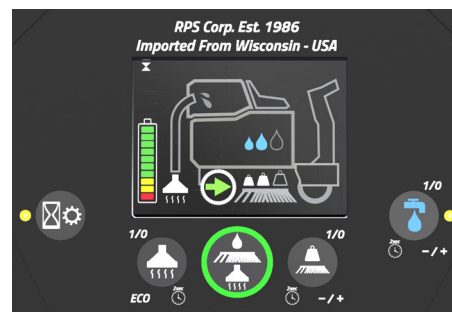
APPLICATIONS



ALL STEEL FRAME



MEMBRANE & LCD

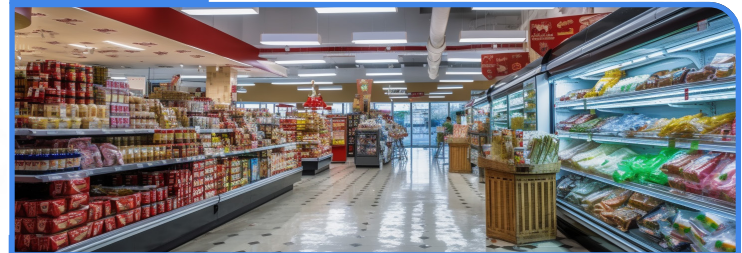


- Easy Scrub Button
- Eco Mode
- 3 Hour Meters
- Three Scrub Pressure Settings
- Three Water Settings
- Service Screen

Education



Grocery



Healthcare



Our Family's American Dream

RPS has been family owned from its inception in 1986, and proudly builds in Wisconsin (USA). The company has grown over the last 35-years with a strong group of executives including the 2nd generation of family owners who started in the shop as youngsters.

Authorized Distributor



Assembled By Hand

Our American workforce hand-builds each machine with components sourced heavily from American suppliers. We routinely pay more for these domestically supplied components required to build a superior product. All design, prototyping, production and testing is done in-house where we can best control quality.



Steel Fabrication

We produce heavy duty equipment and require a good amount of thick steel in the construction. We use a combination of Stainless 304 (Austenitic 18/8) and mild steel with e-coating + powder paint for corrosion resistance. Steel fabrication is done in-house or from local suppliers with specialty equipment.



Rotational Molding

Complex shapes that allow for our tank designs are best achieved with in-house equipment. We own multiple dual station rotational molding machines that allow us to produce finished parts from raw plastic. Producing consistently higher quality parts, and respond quickly to sales spikes.



Product Design

Our team has designed and engineered over 100 unique machines. Each new generation of machines evolve from prior designs to retain the strengths and correct any weakness. From the first pencil sketch we focus on durability, serviceability, performance, productivity, specifications, and value.